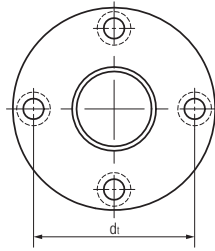
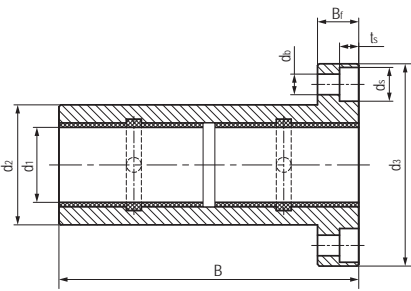


LIN-12RFL 加长型圆法兰塑料直线轴承 Round flange linear bearings(long design)



- 封闭式圆法兰加长设计
- 装配2个LIN-12滑动膜
- 阳极氧化铝合金适配器
- 螺栓固定
- 免维护、低噪音
- 适用于污垢或灰尘环境
- 使用温度-50℃/+90℃
- Closed design with round flange
- Assembled 2pcs liners LIN-12
- Anodized aluminum adapter
- Secured by bolts
- Maintenance-free and low noise
- Resistance to dirt and dust
- Operation temperature -50℃/+90℃

标准规格 Standard specifications



产品编码 Part No.:

LIN-12RFL-10

内径 Inner diameter

圆法兰加长型保持器
Round flange aluminum adapter (long design)

LIN-12标准滑动膜
Standard liners LIN-12

座孔, Housing: H7 轴 Shaft: h6-h9

产品编码 Part No.	d ₁ [mm]	公差 Tolerance [mm]	d ₂ h7 [mm]	d ₃ [mm]	d ₄ [mm]	B [mm]	B ₁ [mm]	t _s [mm]	d ₅ [mm]	d _s [mm]
LIN-12RFL-10	10	+0.030/+0.088	19	39	29	52	9	4.1	4.5	7.5
LIN-12RFL-12	12	+0.030/+0.088	22	42	32	57	9	4.1	4.5	7.5
LIN-12RFL-16	16	+0.030/+0.088	26	46	36	70	9	4.1	4.5	7.5
LIN-12RFL-20	20	+0.030/+0.091	32	54	43	80	11	5.1	5.5	9
LIN-12RFL-25	25	+0.030/+0.091	40	62	51	112	11	5.1	5.5	9
LIN-12RFL-30	30	+0.030/+0.110	47	76	62	123	14	6.1	6.6	11
LIN-12RFL-40	40	+0.030/+0.115	62	98	80	151	18	8.1	9	14
LIN-12RFL-50	50	+0.030/+0.130	75	112	94	192	18	8.1	9	14

产品编码 Part No.	轴径 Shaft [mm]	座孔 Housing h7 [mm]	公差 Tolerance [mm]	F max. [N] 最大动载荷 Dynamic Load P=5MPa	F max. [N] 最大静载荷 Static Load P=35MPa	重量 Weight [g]
LIN-12RFL-10	10	19	0/+0.021	1300	9100	44
LIN-12RFL-12	12	22	0/+0.021	1680	11760	57
LIN-12RFL-16	16	26	0/+0.021	2400	16800	79
LIN-12RFL-20	20	32	0/+0.025	3000	21000	126
LIN-12RFL-25	25	40	0/+0.025	5000	35000	249
LIN-12RFL-30	30	47	0/+0.025	7500	52500	388
LIN-12RFL-40	40	62	0/+0.030	12000	84000	835
LIN-12RFL-50	50	75	0/+0.030	17500	122500	1352